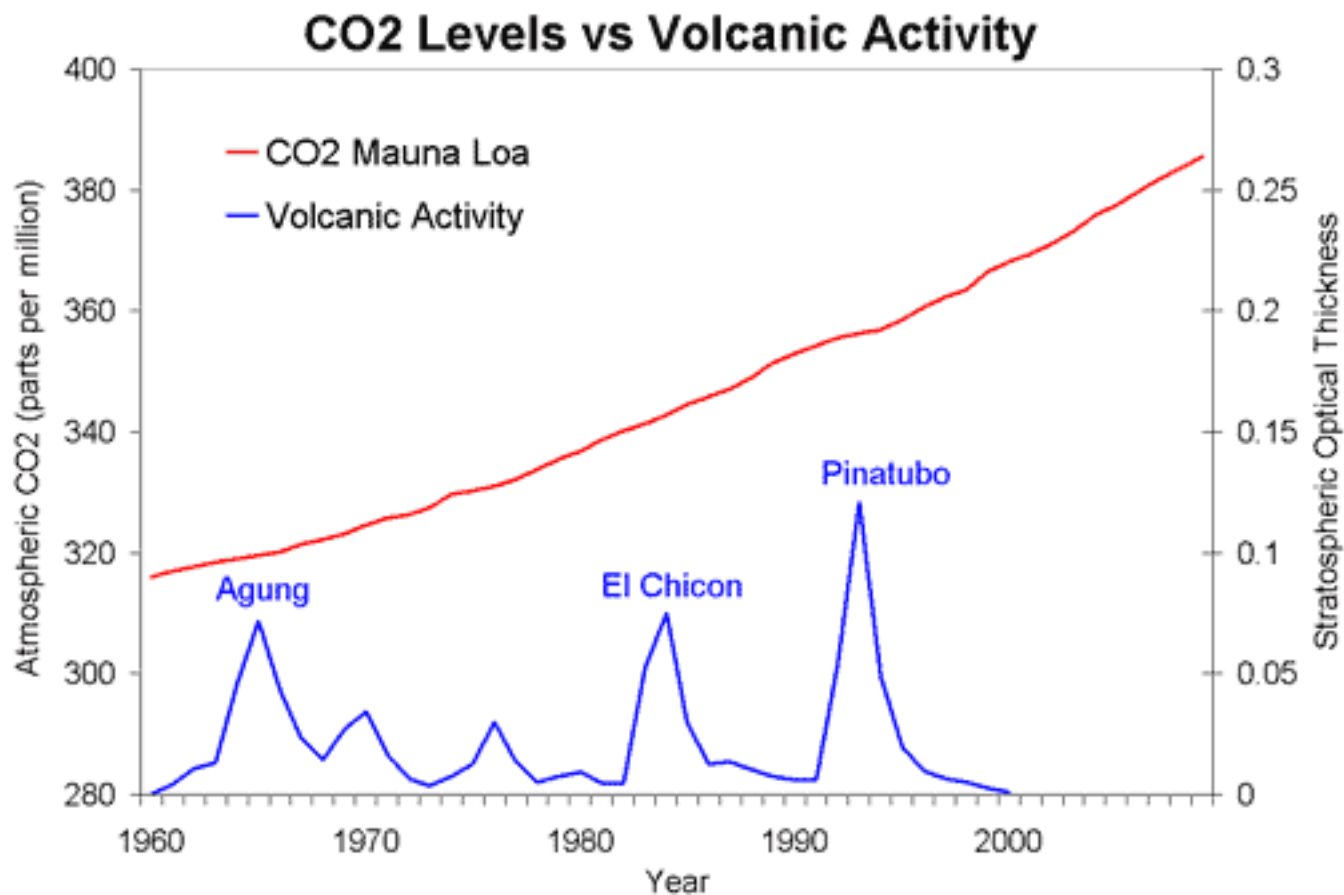


Figure 1 – CO₂ Levels vs. Volcanic Activity



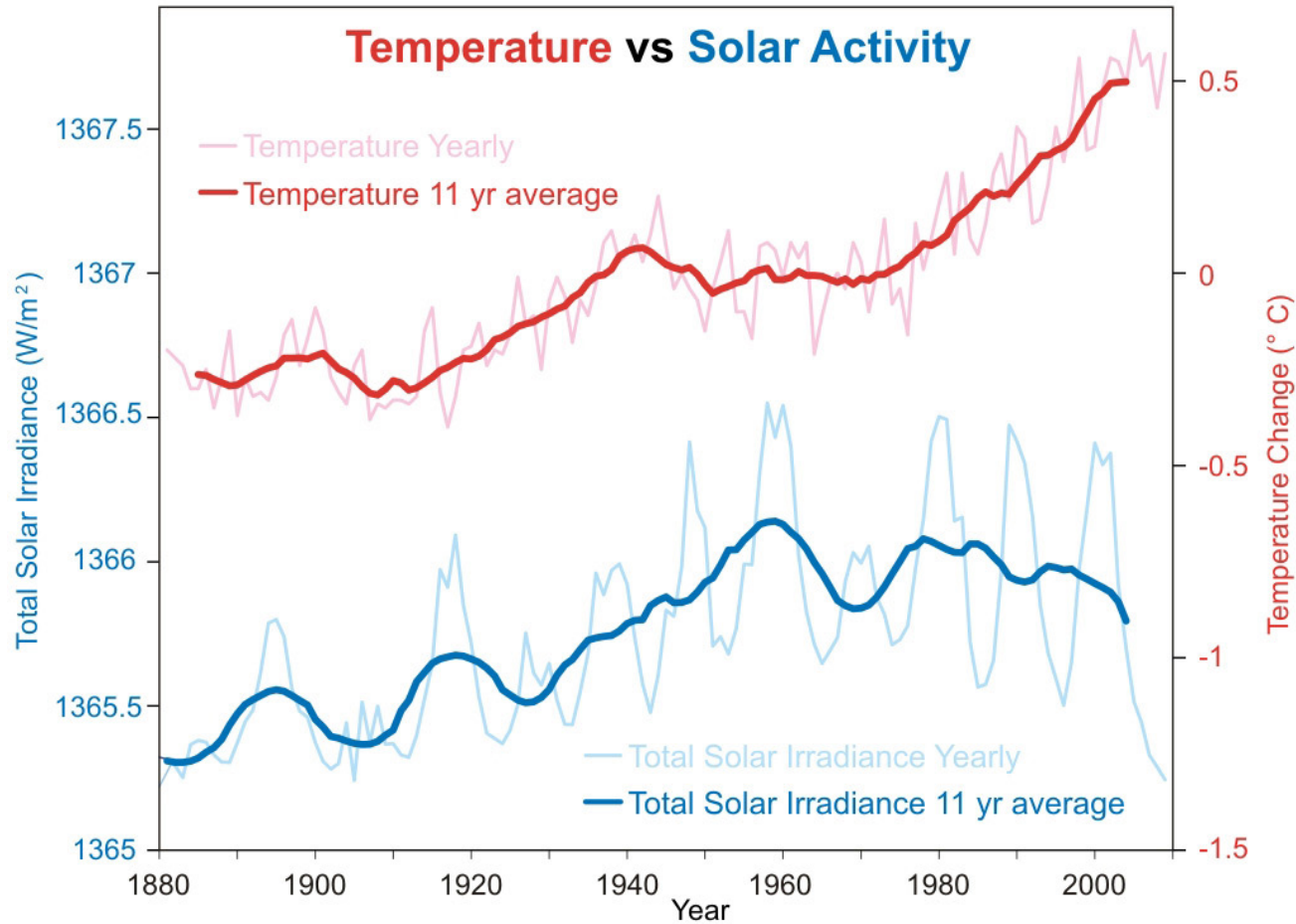
Note: Stratospheric Optical Thickness is the measure of aerosols (e.g., urban haze, smoke particles, desert dust, sea salt) distributed within a column of air from the instrument (Earth's surface) to the top of the atmosphere.

Skeptical Science. (2015). *Do volcanoes emit more CO₂ than humans?* Retrieved from www.skepticalscience.com/print.php?r=50

Skeptical Science Graphics by [Skeptical Science](http://www.skepticalscience.com) is licensed under a [Creative Commons Attribution 3.0 Unported License](https://creativecommons.org/licenses/by/3.0/).



Figure 2 – Temperature vs. Solar Activity

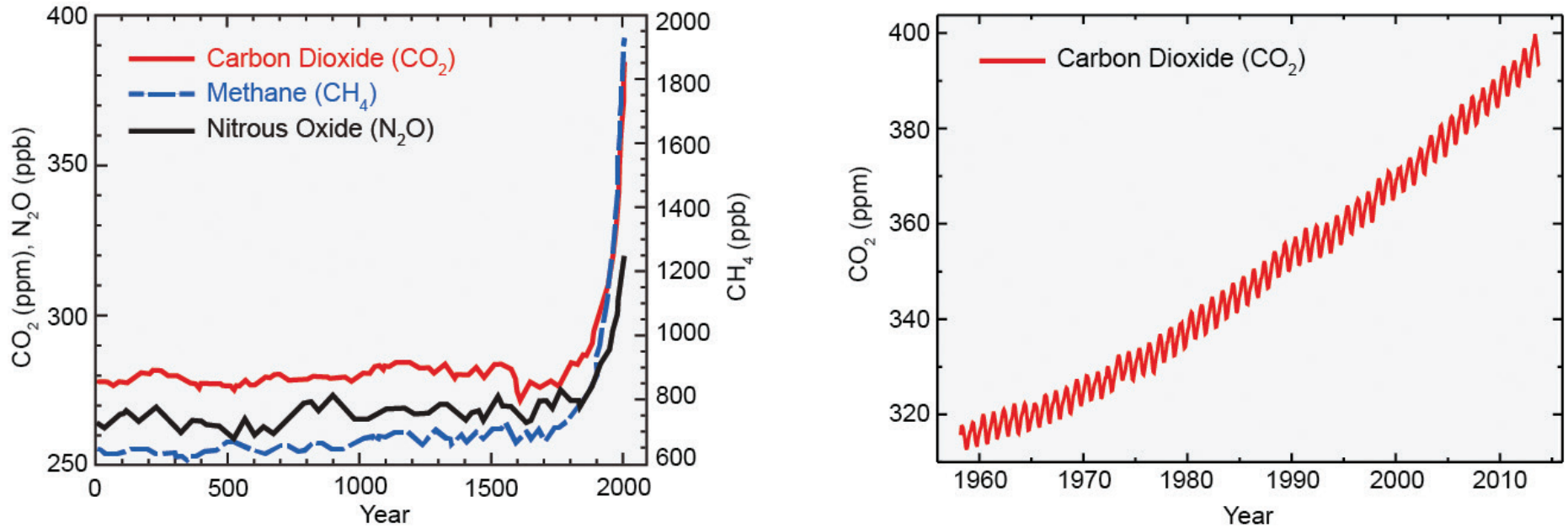


Note: Total Solar Irradiance is the power per unit area produced by the Sun.

Skeptical Science. (2015). *Sun & climate: moving in opposite directions*.
Retrieved from <https://www.skepticalscience.com/solar-activity-sunspots-global-warming.htm>

Skeptical Science Graphics by [Skeptical Science](https://www.skepticalscience.com/) is licensed under a [Creative Commons Attribution 3.0 Unported License](https://creativecommons.org/licenses/by/3.0/).

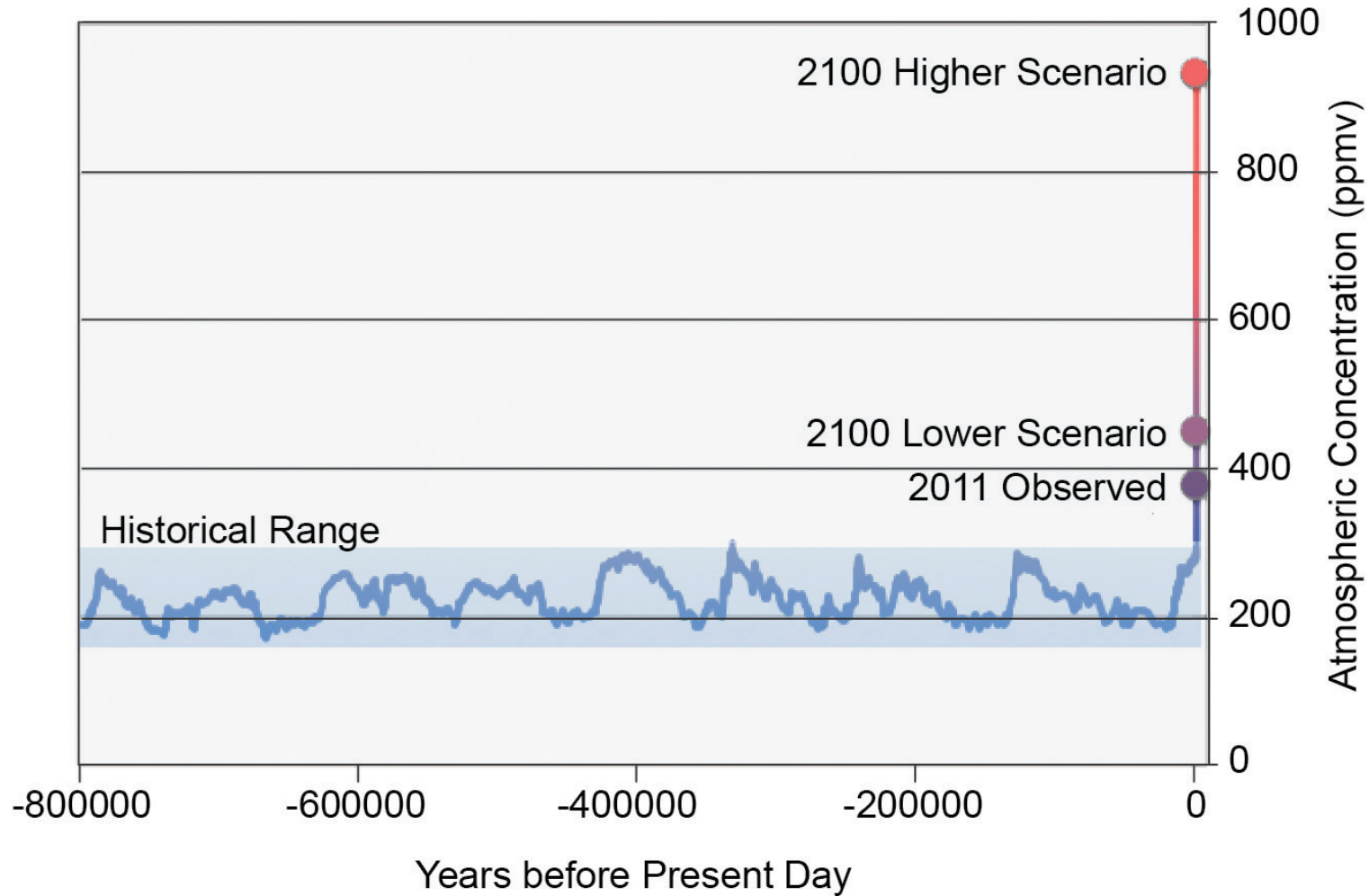
Figure 3 – Heat-Trapping Gas Levels



National Climate Assessment and Development Advisory Committee. (2014). *Climate Science Supplement*. Retrieved from <http://nca2014.globalchange.gov/report/appendices/climate-science-supplement>
Source: Adapted from: Climate Change 2013: The Physical Science Basis

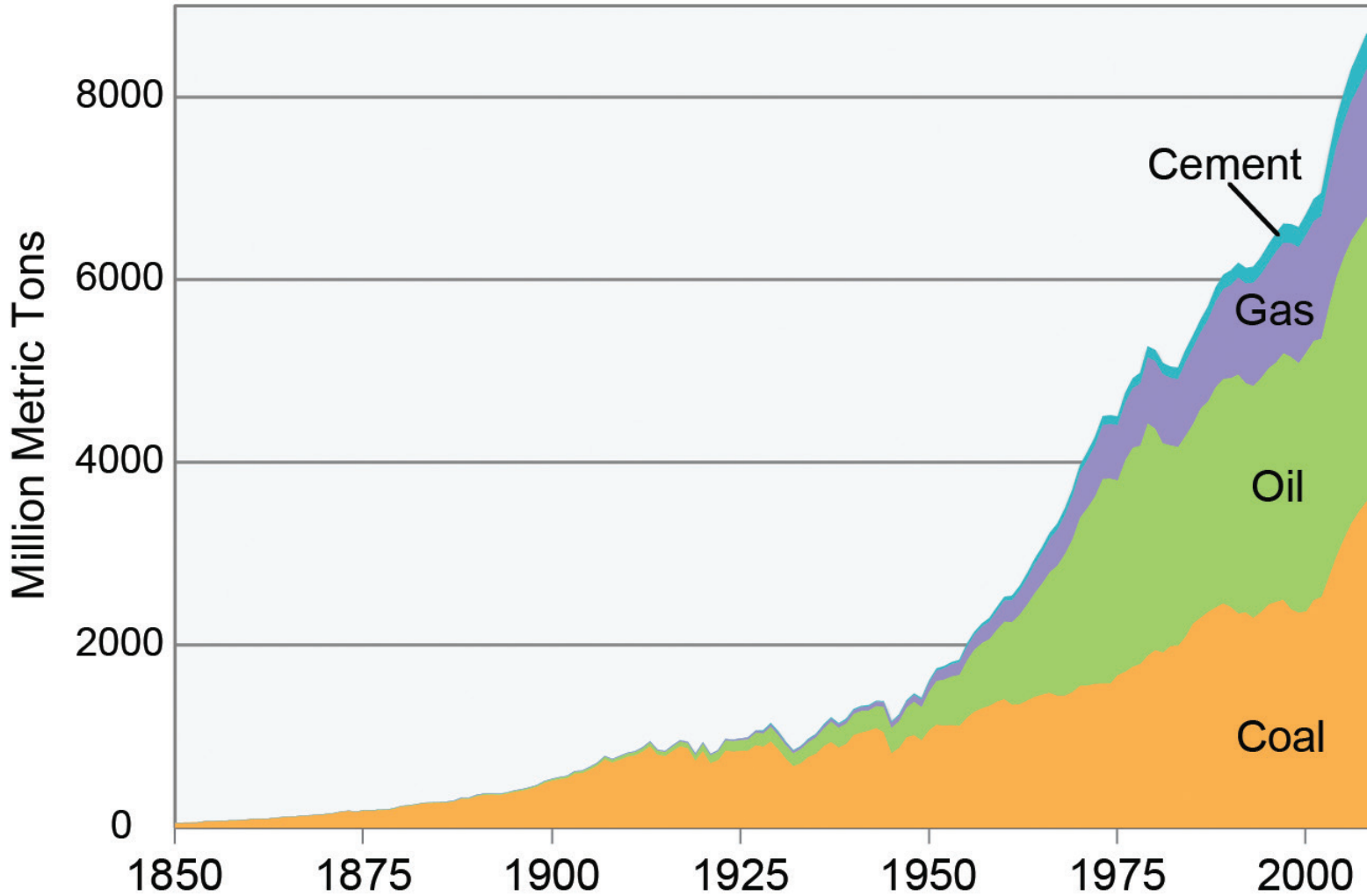


Figure 4 – Atmospheric Carbon Dioxide Levels



National Climate Assessment and Development Advisory Committee. (2014). *Climate Science Supplement*. Retrieved from <http://nca2014.globalchange.gov/report/appendices/climate-science-supplement>
Source: Katharine Hayhoe, Texas Tech University

Figure 5 – Carbon Emissions in the Industrial Age

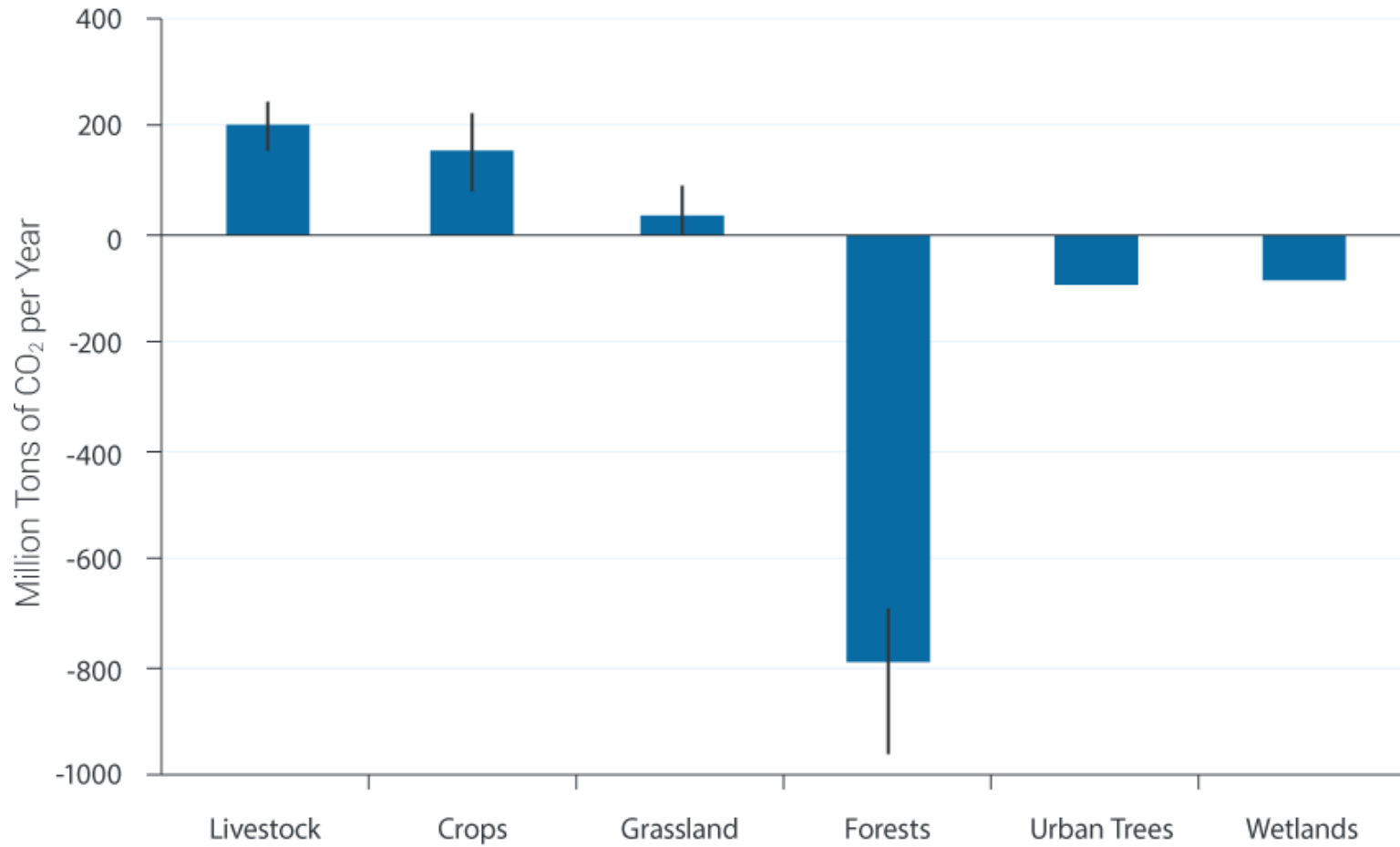


National Climate Assessment and Development Advisory Committee. (2014). *Climate Science Supplement*. Retrieved from <http://nca2014.globalchange.gov/report/appendices/climate-science-supplement> (Source: Katharine Hayhoe, Texas Tech University)



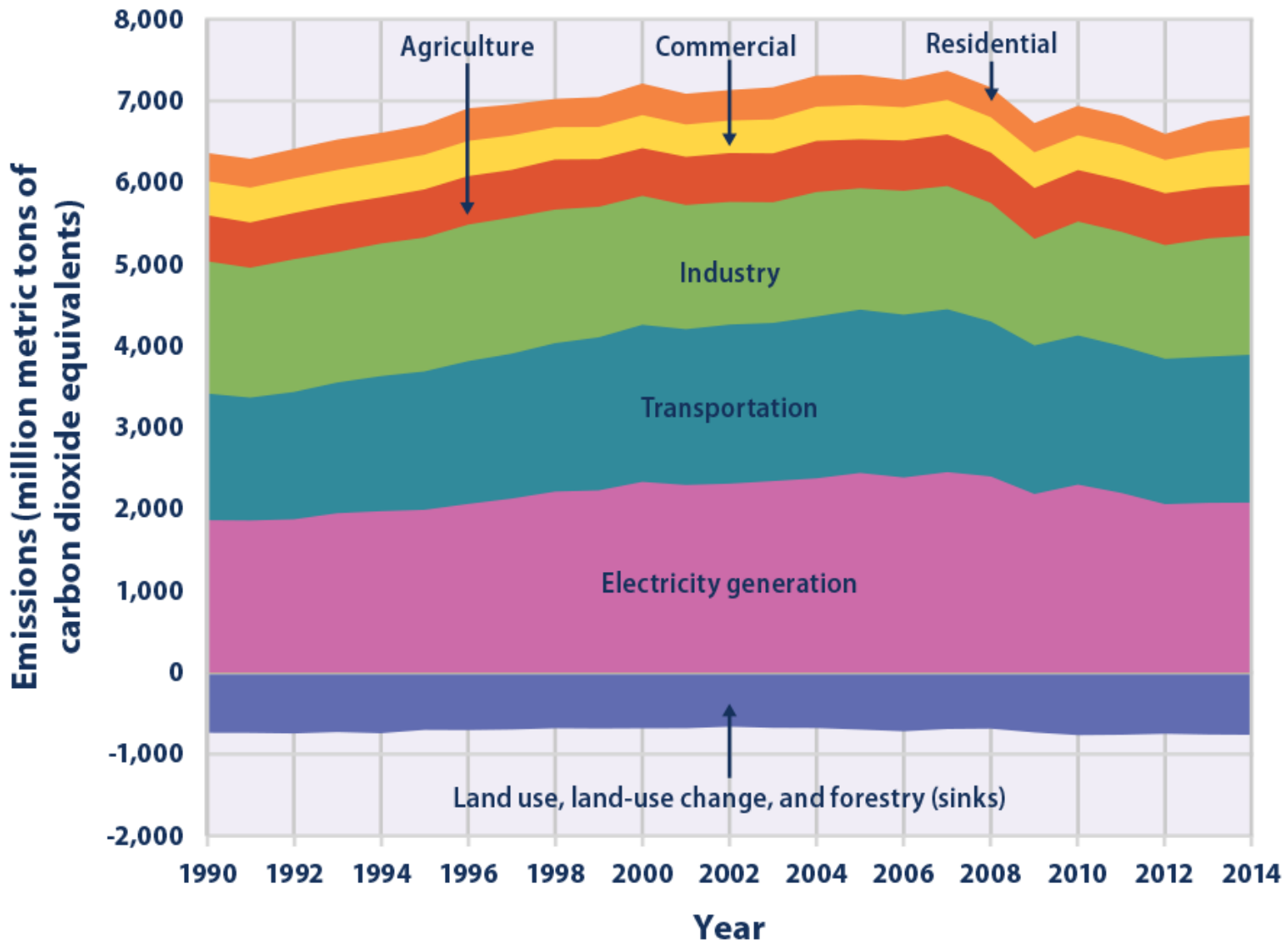


Figure 6 – Sources and Sinks in U.S. Agriculture and Forests



National Climate Assessment and Development Advisory Committee. (2014). *Mitigation*. Retrieved from <http://nca2014.globalchange.gov/report/response-strategies/mitigation#graphic-17171>

Figure 7 – U.S. Greenhouse Gas Emissions and Sinks by Economic Sector from 1990–2014

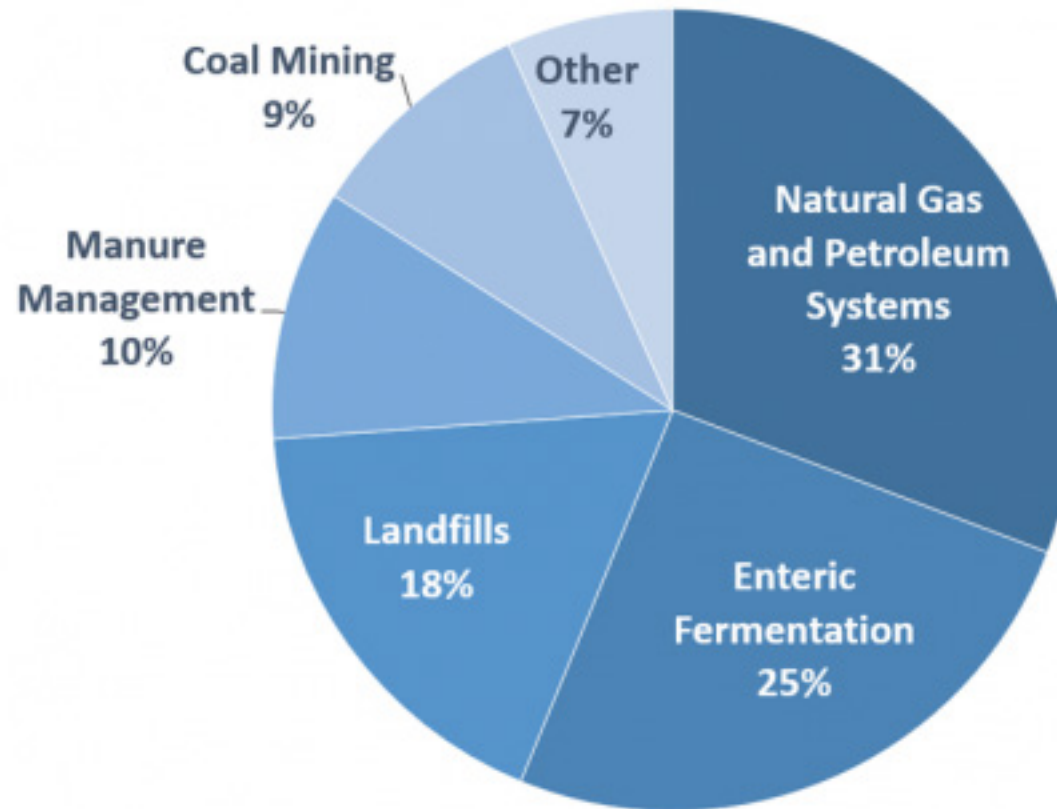


Data Source: U.S. EPA (U.S. Environmental Protection Agency). 2016. Inventory of U.S. Greenhouse gas emissions and sinks: 1990-2014. EPA 430-R-16-004. www.epa.gov/climatechange/ghgemissions/usinventoryreport.html.

U.S. Environmental Protection Agency. (2015). *Climate Change Indicators in the United States*. Retrieved from <https://www.epa.gov/climate-indicators/climate-change-indicators-us-greenhouse-gas-emissions>



Figure 8 – U.S. Methane Emissions, by source

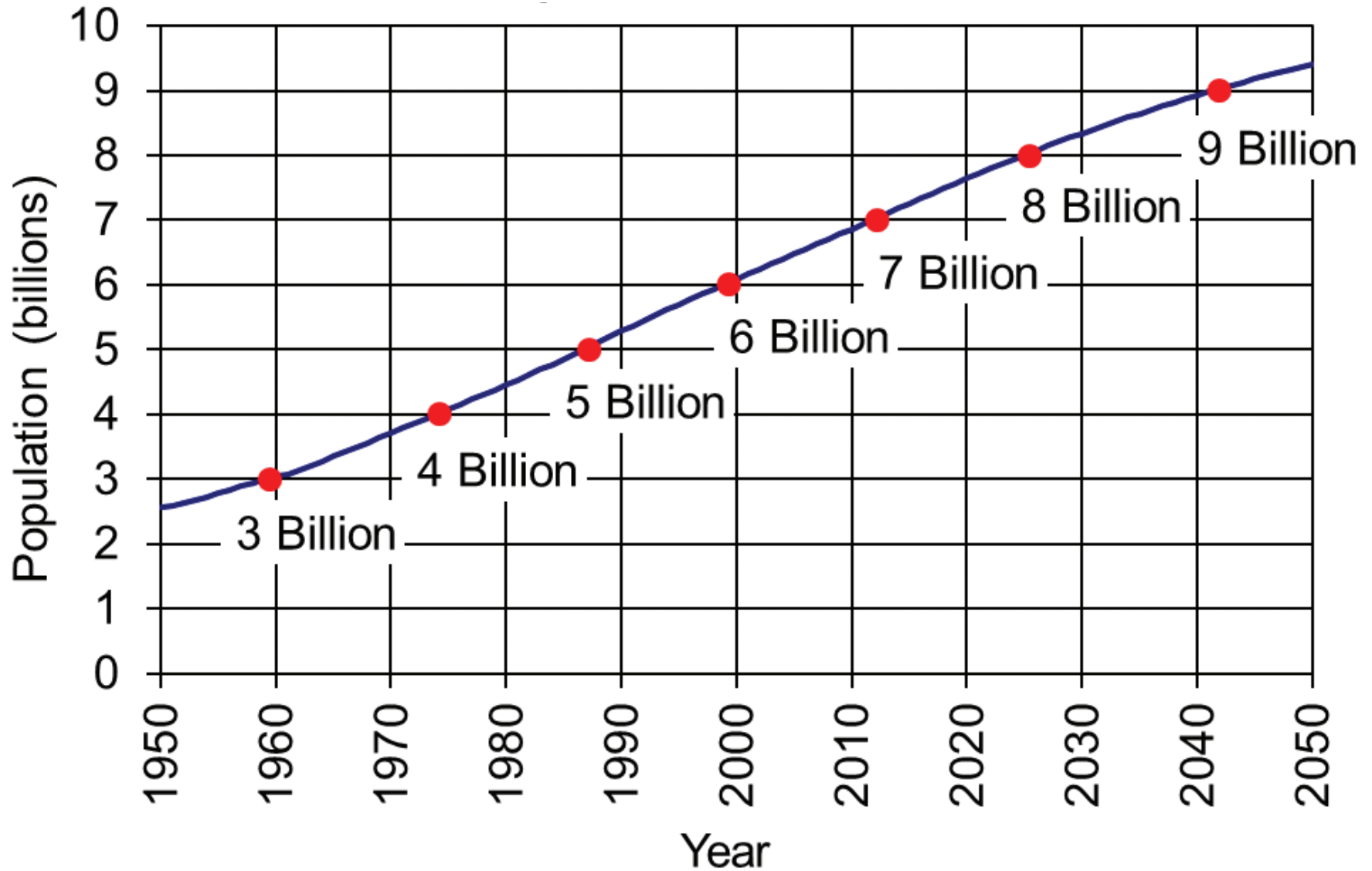


U.S. Environmental Protection Agency (2017). Inventory of U.S. Greenhouse Gas Emissions and Sinks: 1990-2015.

U.S. Environmental Protection Agency. (2016). *Overview of Greenhouse Gases*. Retrieved from <https://www.epa.gov/ghgemissions/overview-greenhouse-gases>



Figure 9 – World Population: 1950-2050

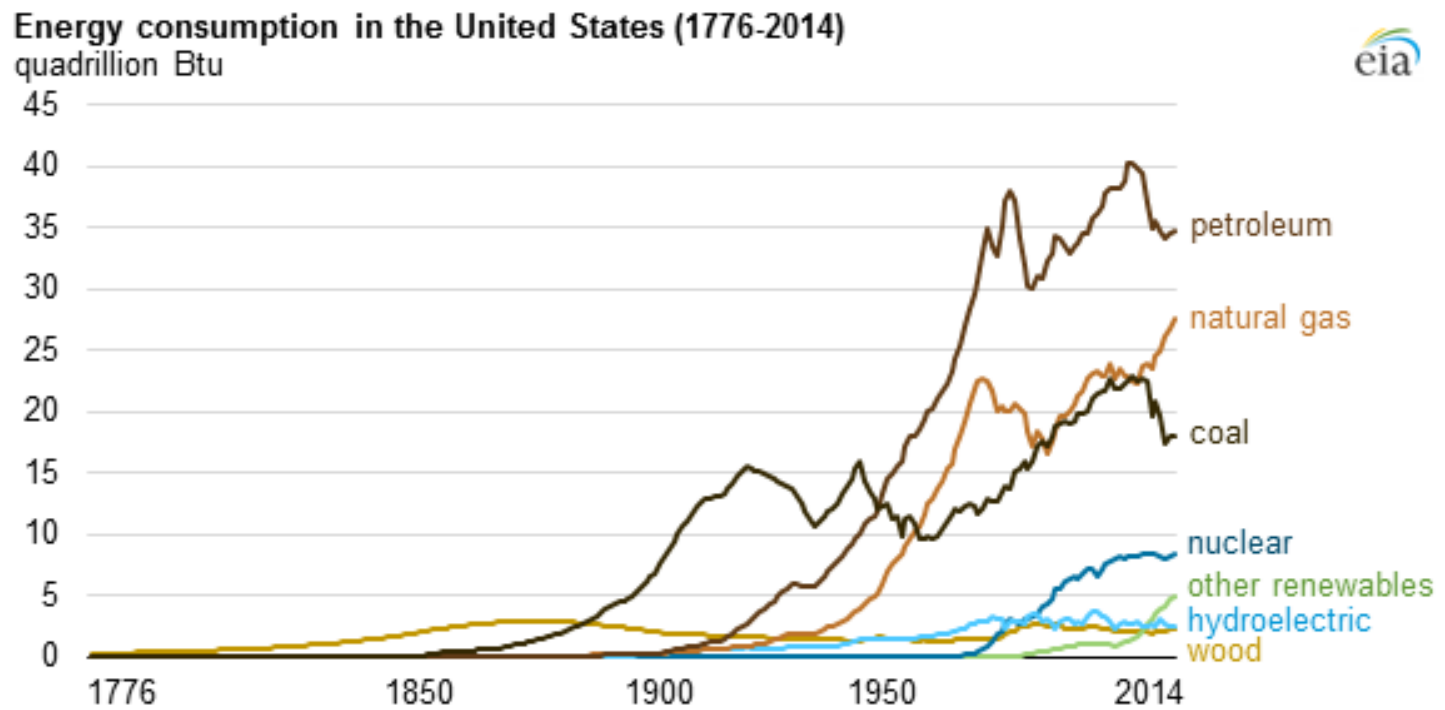


U.S. Census Bureau. (2015). *International Programs*.

Retrieved from <https://www.census.gov/population/international/data/idb/worldpopgraph.php>



Figure 10 – Energy Consumption in the United States (1776-2014)



U.S. Energy Information Agency. (2015). *Today in Energy*.
Retrieved from <http://www.eia.gov/todayinenergy/detail.cfm?id=21912>
(Source: U.S. Energy Information Administration, Monthly Energy Review)

